

A large, gnarled tree with a house built into its canopy. The house has a red roof and a balcony. A treehouse is visible in the upper part of the canopy. The background is a light blue sky. The image is framed by a white circular border.

roof coliving

ROADMAP

**for a local alliance for collective
housing in Türkiye**

Contributors

Emre Güzel
İzel Büyükgöze
Zeynep Aybüke Mutlu

We thank Buca Municipality who contributed as a local government partner throughout the “Learning About The Collective Development & Management Of Buildings Project”, ACRED team members Csaba Jelinek , Zsuzsanna Pósfai ve Flóra Cieger, who provided infrastructure in producing the report and generously shared their knowledge and experiences with us, and Karşıyaka Municipality who provided support for us to improve the report with their feedback after the report had been compiled.



roof coliving

THE:PLACE

TURKEY HAND IN HAND WITH EUROPE
PROGRAMME FOR LOCAL AUTHORITIES
AND CIVIL SOCIETY'S EXCHANGE



alda
European Association
for Local Democracy



**STIFTUNG
MERCATOR**

This publication was prepared with the financial support of Stiftung Mercator within the scope of THE: PLACE program. Roof Coliving takes responsibility for the content therein, and it does not reflect the views of ALDA, MAD and Stiftung Mercator.

This publication can be copied, distributed and reused with non-commercial purposes without permission, under the condition that Roof Coliving is credited for the work, but cannot be adjusted. We thank the team of THE:PLACE Programme, European Association for Local Democracy (ALDA), the Center for Spatial Justice (MAD) for their contributions in preparing this publication, and Stiftung Mercator for their financial support.

hello!

Welcome to Roof Coliving's visionary initiative focused on fostering positive change in housing and community development within Turkey. Our ultimate goal is to establish a dynamic Community of Practice that engages diverse civil actors across intersecting domains, all united by a shared commitment to the fundamental right to housing and THE: PLACE Programme helped us lay the groundwork for this while we exchange knowledge with our partner The Alliance for Collaborative Real Estate Development within ***"Learning about the collective development and management of buildings"*** project.





vision

Our routemap vision is to forge a robust Community of Practice that engages in thoughtful discourse, collaborative development, and effective implementation of community-led housing solutions.

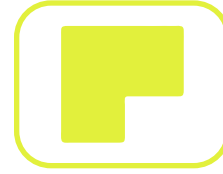
By bringing together individuals and organizations from various sectors, we aspire to catalyze a movement that addresses housing challenges holistically, ultimately contributing to more equitable and sustainable living conditions in Turkey.



mission

At the heart of our routemap mission lies the dedication to advance, establish, and disseminate community-led housing opportunities for those who are most vulnerable and marginalized.

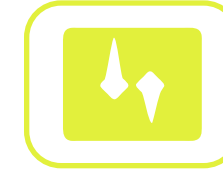
Through active engagement with civil actors, we aim to empower communities, facilitate access to dignified housing, and drive systemic changes that prioritize the well-being and rights of every individual.



method

Our approach centers on the creation of a vibrant housing-focused community of practice. By fostering a collaborative environment, we facilitate the exchange of knowledge, experiences, and innovative ideas among diverse stakeholders.

Through this iterative process, we intend to coalesce expertise, identify best practices, and collectively design and implement housing solutions that are rooted in community needs.



values

At the core of our endeavor are democratic principles and inclusivity. We firmly believe that every voice matters and that a comprehensive solution can only emerge through the active participation of all stakeholders.

Our commitment to democratic decision-making ensures that perspectives from various backgrounds and sectors are heard, respected, and integrated into the development of housing strategies. Inclusivity remains our guiding light, ensuring that no one is left behind in the journey towards improved housing opportunities.

Who is this routemap for?

This routemap is dedicated to all visionary individuals, passionate community leaders, urban planners, housing advocates, policymakers, and changemakers who share a common aspiration: to empower communities and foster sustainable, community-led housing initiatives. Whether you are an experienced professional in the field of housing and development or a concerned citizen eager to make a positive impact, this route map invites you to join our collaborative journey.

It extends its hand to those who believe in the transformative power

of community-driven solutions and the vital role of affordable, inclusive housing in shaping vibrant societies. Whether you are driven by a sense of social justice, environmental sustainability, or a deep commitment to strengthening the fabric of neighborhoods, this routemap welcomes your diverse perspectives and expertise. Together, we will work towards a future where housing is not just a commodity, but a fundamental human right realized through collective effort.

Together, we will build a legacy of lasting impact and meaningful change within our communities.



In the pursuit of equitable and sustainable housing solutions, the power of collective action and knowledge-sharing cannot be overstated. Housing activism, a crucial pillar of social change, seeks to address housing inequality and gentrification, among other pressing issues.

To harness the transformative potential of this movement, the establishment of a Community of Practice (CoP) dedicated to community-led housing activism becomes imperative. A Community of Practice brings together individuals and organizations united by their shared passion for a domain of knowledge and practice, facilitating collaborative learning, idea exchange, and collective problem-solving.

By fostering solidarity, mobilizing grassroots power, and promoting knowledge transfer, a CoP for community-led housing activism can empower communities to take charge of their housing future and advocate for a just society.

A Community of Practice (CoP) is a group of individuals who come together based on shared interests, concerns, or a common passion for a particular domain of knowledge or practice. CoPs foster collaborative learning and knowledge-sharing through meaningful interactions and discussions. Members of a CoP engage in ongoing communication, exchange

experiences, best practices, and collectively strive for improvements in their field of interest. Unlike formal training or workshops, CoPs are self-organized, voluntary, and driven by the members themselves.

Creating a Community of Practice for housing activism is essential for catalyzing meaningful social change due to several key reasons:



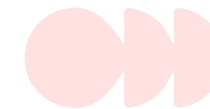
**Knowledge
Amplification**



**Mobilizing
Grassroots
Power**



**Building
Solidarity**



**Knowledge
Transfer and
Capacity
Building**



**Policy
Influence**



knowledge amplification

CoPs provide a platform for individuals with diverse experiences and expertise to come together and pool their knowledge. By sharing insights, successes, and challenges, members can collectively amplify their understanding of housing issues and develop more effective strategies for change.



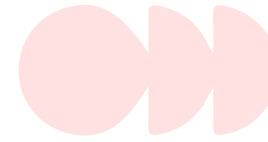
mobilizing grassroots power

Housing activism often starts at the grassroots level, with community members directly affected by housing challenges. A CoP empowers local activists and residents to collaborate, mobilize their collective power, and advocate for transformative policy changes.



building solidarity

By fostering a sense of belonging and camaraderie, CoPs create a support system for activists who might otherwise feel isolated. Solidarity within the CoP helps sustain motivation and resilience in the face of obstacles.



knowledge transfer and capacity building

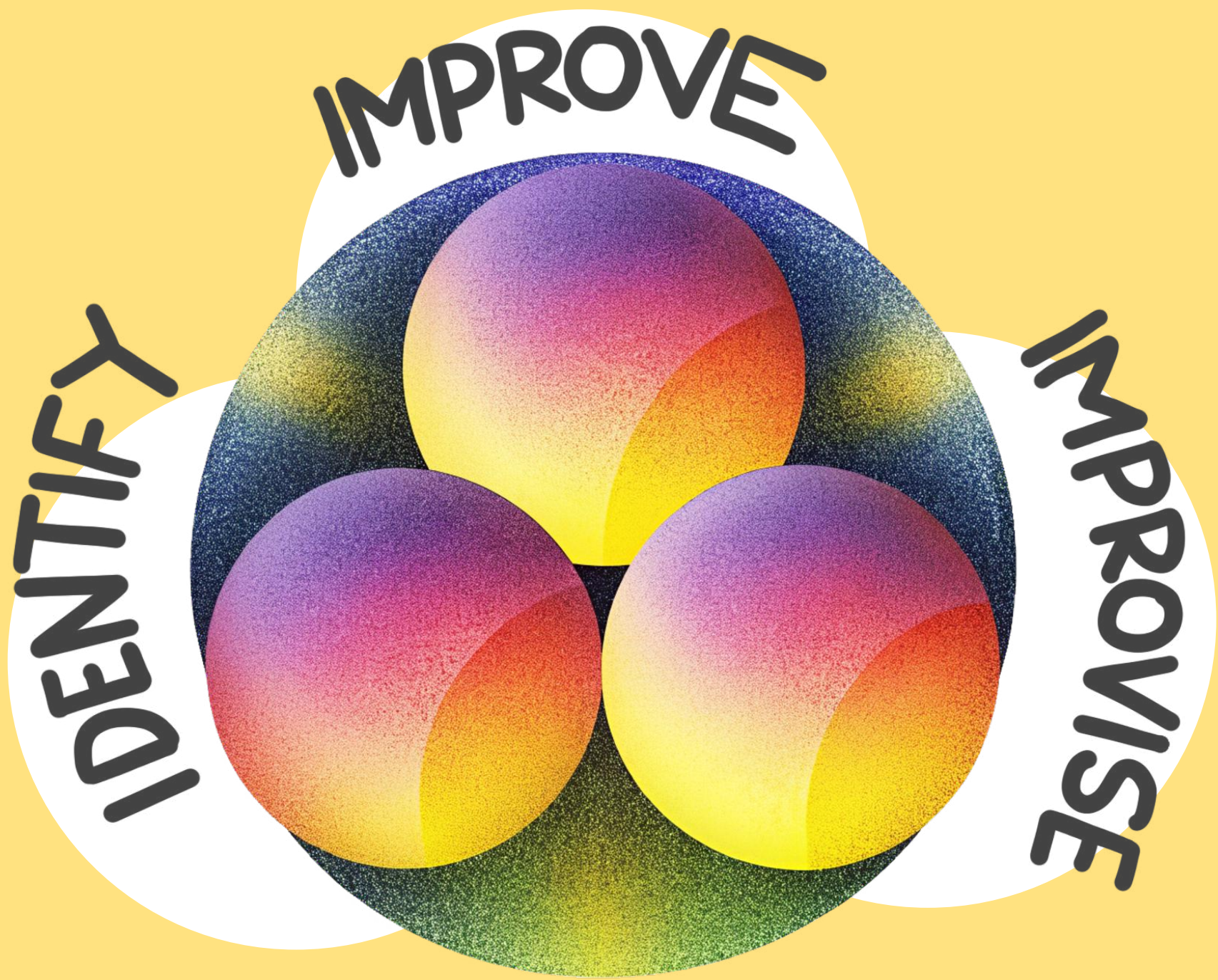
Seasoned activists can mentor and share their wisdom with newer members, ensuring knowledge continuity and capacity building within the movement.



policy influence

A well-connected and informed CoP can effectively communicate the housing issues to policymakers, bringing their voices to the decision-making table and influencing relevant policies.

approach



In the pursuit of empowering housing activism and fostering meaningful social change, the establishment of a vibrant and dynamic Community of Practice (CoP) dedicated to community-led housing activism becomes paramount. At the heart of this initiative lies the guiding principle of "Identify, Improve, Improvise," an approach that seeks to identify common goals and challenges within the community, continuously improve existing strategies and practices, and embrace adaptability and innovation. This purpose-driven approach ensures that the community of practice remains responsive to the evolving needs of its members, effectively addressing housing issues, and collectively driving transformative change. Importantly, the adoption of the "Identify, Improve, Improvise" approach encourages iterative studies, enabling the CoP to engage in ongoing learning, reflection, and refinement of its initiatives. By embracing this iterative process, the community of practice aims to foster a culture of continuous improvement, building upon past experiences, and maximizing the impact of its advocacy efforts towards a future of equitable and community-led housing solutions.

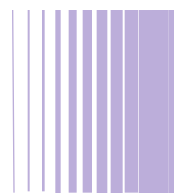
The first step in the "Identify, Improve, Improvise" approach is to identify the key challenges, opportunities, and areas of interest within the community of practice. This involves understanding the needs and aspirations of the members, their expertise, and the overarching goals of the community. By pinpointing these factors, the community can gain clarity on its purpose and direction, ensuring that efforts are focused on addressing relevant issues. The second aspect of the approach is continuous improvement. This involves assessing the existing processes, communication channels, and strategies within the community of practice. Regular evaluation allows members to identify areas that need enhancement or modification to ensure better outcomes. Feedback mechanisms, surveys, and open discussions are useful tools to gather insights and suggestions for improvement. The third component of the approach is the ability to improvise and adapt. As a community of practice evolves, new challenges and opportunities arise, and external factors may also impact its functioning. The ability to be flexible and open to change is crucial in this context. Members should be encouraged to experiment with innovative ideas, adapt to changing circumstances, and embrace learning from both successes and failures.

The benefits of the "Identify, Improve, Improve" are:



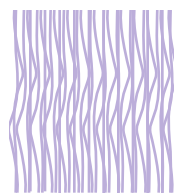
goal alignment

By starting with the identification of common goals and challenges, the approach ensures that all community members are aligned with a shared purpose. This alignment strengthens collaboration and cooperation within the community.



continuous growth

The focus on improvement fosters a culture of continuous learning and development. As the community identifies areas that need enhancement, it can make data-driven decisions to grow and evolve.



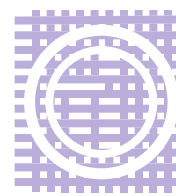
resilience and agility

Emphasizing improvisation allows the community of practice to remain resilient and adaptable in the face of unforeseen circumstances or challenges. This continuous reflexivity enables the community to navigate changing environments effectively.



member engagement

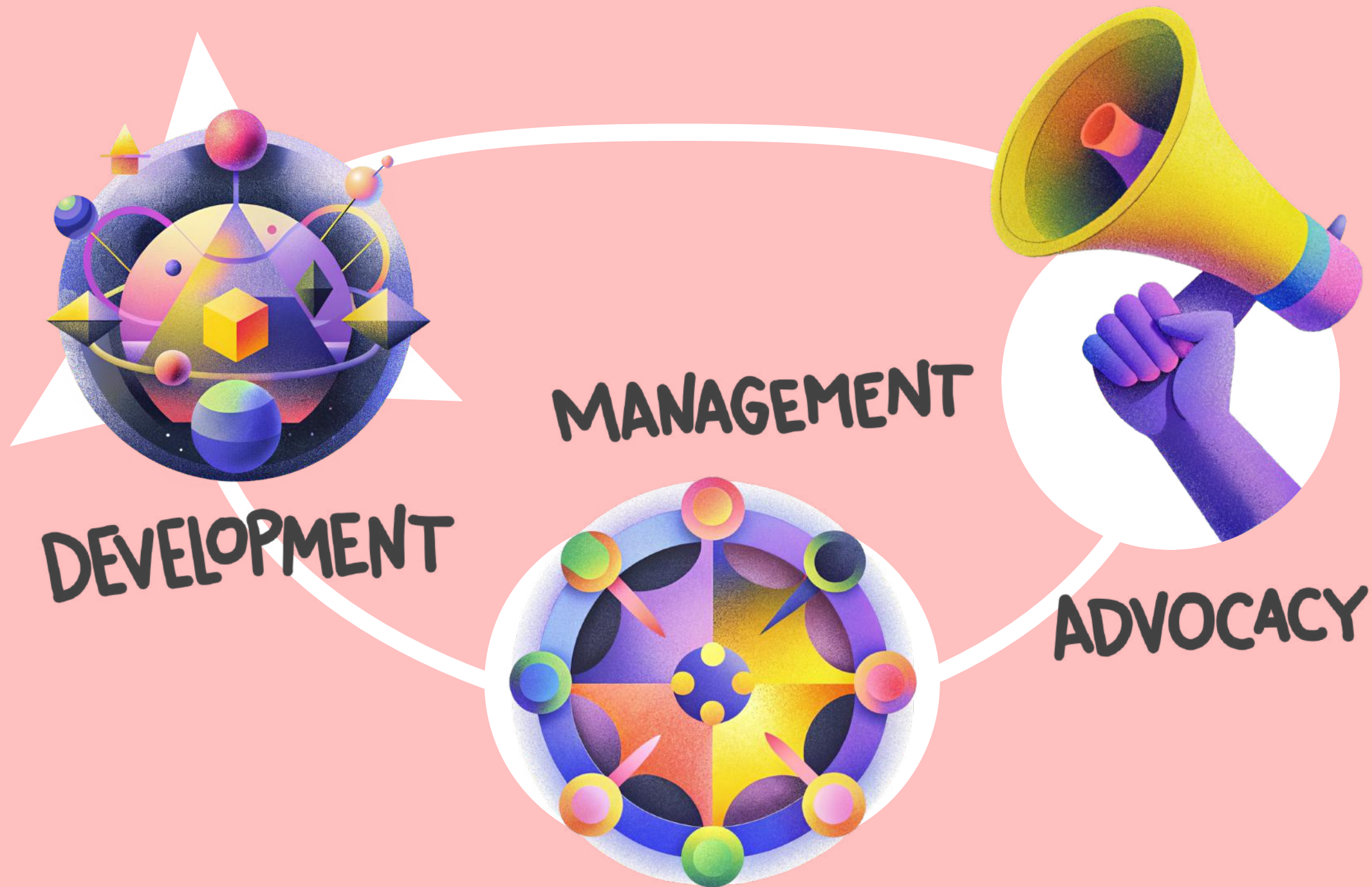
When community members see that their ideas and feedback are valued and acted upon, they become more engaged and invested in the community's success. This boosts participation and fosters a sense of belonging among members.



sustainable & tangible impact

The "Identify, Improve, Improve" approach ensures that the community of practice is always striving for greater effectiveness and relevance. By continuously identifying and addressing areas of improvement, the community can achieve more sustainable and lasting impact on its objectives.

objectives



The envisioned Community of Practice (CoP) for housing activism seeks to pursue development, advocacy, and management objectives to address housing inequality and insecurity. At the heart of this routemap lies our paramount objectives: to conceive, cultivate, and proficiently oversee community-led housing models, translating ideals into tangible realities. Our commitment to the meticulous management and successful execution of these initiatives echoes our belief in equitable access to secure, affordable housing solutions, resonating with the core principles of social progress and human dignity. Through these endeavors, we aspire to pioneer a transformative paradigm shift in housing, unveiling the latent potential within communities to shape their own destinies. By fostering collaborative knowledge exchange, the CoP aims to develop and implement durable housing models that transcend market offerings, prioritizing affordability and sustainability. Engaging in from grassroots level to policy-level advocacy, the community will set forth evidence-based proposals, monitor policy implementation, evaluate outcomes, and support the development of inclusive housing policies. Through effective governance and management structures, the CoP ensures the sustainability and responsiveness of implemented housing initiatives. Collective empowerment and resilience are fostered as members collaborate and learn from each other, driving transformative change towards a future of equitable and community-led housing solutions. All of the focal areas determined along the routemap are

based on these three objectives.

Keep in mind...

As a small community, our biggest motivation is for an implementation that can set a good example. Therefore, in addition to the long journey we are following in the routemap, we aim to work continuously to create a housing implementation. A start for this was our small community house in Ankara, and for more, we will continuously search for buildings that can be found in the market, which are suitable for our goals, and we will continue to look for ways to access suitable communities for them throughout the entire routemap process. In this way, by identifying the working/non-working parts of the models that are the result of our previous work, we can create more qualified community-based spaces and move forward with more confident steps. We believe that progressing through the Routemap will ease this process and make it possible for various communities in different locations.

Introduction for Focus Areas

In response to the critical need for sustainable and equitable housing solutions, Roof Coliving has meticulously designed a comprehensive routemap for a Community of Practice (CoP) centered around collective housing and housing issues. Our strategic approach focuses on four pivotal activities, each tailored to address distinct dimensions of the housing crisis.



**Focus 1: Creating the Initial
Governance Scheme of CoP**

**Focus 2: Creating Alternative Housing
Finance Models**

Focus 3: Localize the Movement

**Focus 4: Spread the Action &
Scale Your Impact**



roof coliving ROADMAP

for a local alliance for collective housing in Türkiye



This routemap is dedicated to all visionary individuals, passionate community leaders, urban planners, housing advocates, policymakers, and changemakers who share a common aspiration: to empower communities and foster sustainable, community-led housing initiatives. Whether you are an experienced professional in the field of housing and development or a concerned citizen eager to make a positive impact, this route map invites you to join our collaborative journey. It extends its hand to those who believe in the transformative power of community-driven solutions and the vital role of affordable, inclusive housing in shaping vibrant societies. Whether you are driven by a sense of social justice, environmental sustainability, or a deep commitment to strengthening the fabric of neighborhoods, this routemap welcomes your diverse perspectives and expertise. Together, we will work towards a future where housing is not just a commodity, but a fundamental human right realized through collective effort.

Join us as we embark on this transformative journey, leveraging the power of collaboration, empathy, and expertise to shape a future where every individual in Turkey can access safe, affordable, and dignified housing. Together, we will build a legacy of lasting impact and meaningful change within our communities.

Focus 1: Creating the Initial Governance Scheme of CoP

At the heart of our routemap lies the essential task of establishing a robust governance framework for the Community of Practice. We recognize that effective collaboration and transformative change require a clear and inclusive structure. By carefully designing the initial governance scheme, we are setting the stage for transparent decision-making, participation, and accountability among all stakeholders involved. This foundational activity ensures that the CoP operates as a cohesive and empowered entity, united in the pursuit of collective housing solutions.

We have identified four activities for this focus area. In the first one, meetings are planned with the institutions that we can easily reach and with which we have various collaborations, to re-communicate in the context of the routemap and to form the basis for a wide open call. In the second one, it is aimed to reach ecosystem actors with a collaborative call and to include

them in the CoP. In the third, it is aimed to design joint decision-making processes and to encourage participation in local/national/international decision-making processes and to take action on this issue. Finally, it is planned to establish the work force, communication and coordination of the CoP. Through the meticulous execution of these activities, we aim to lay the groundwork for a robust governance framework that embodies transparency, inclusivity, and collective ownership. This initial phase will set the stage for the CoP's dynamic growth and effective pursuit of transformative housing solutions.

Activity #01

Engage the Early Adopter People

In order to establish a vibrant and inclusive Community of Practice (CoP), we recognize the importance of engaging early adopters who are passionate about collective housing solutions. This activity involves identifying individuals and groups who are enthusiastic about driving change in the housing sector. By involving these pioneers from the outset, we tap into their expertise, commitment, and innovative thinking to shape the CoP's foundation. Their involvement sets a precedent for active participation, fostering a culture of shared responsibility and collaboration.

Activity #02

Engage the Institutional/Ecosystem Actors

Building a robust governance framework requires the engagement of institutional and ecosystem actors that have a stake in housing and community development. This activity focuses on reaching out to governmental bodies, NGOs, academia, businesses, and other relevant entities. By forging strategic partnerships and alliances, we ensure a well-rounded representation of diverse perspectives and resources. Collaborating with these actors not only enriches the CoP's expertise but also enhances its capacity to effect meaningful change at a systemic level.

Activity #03

Participating in Decision-Making Processes

Active participation and decision-making lie at the heart of an effective CoP. This activity centers on establishing mechanisms that facilitate democratic decision-making. By providing a setting for open discussions, deliberations, and consensus-building, we ensure that all stakeholders contribute to shaping the CoP's direction. This inclusive approach not only empowers participants but also fosters a sense of belonging and commitment to the collective mission of advancing community-led housing solutions.

Activity #04

Identify the Workforce and Coordination of Community of Practice

To drive the CoP's activities forward, a well-defined workforce and coordination mechanism are essential. This activity involves identifying key roles, responsibilities, and skill sets required to manage the CoP's operations effectively. By clarifying these aspects, we ensure smooth communication, efficient resource allocation, and seamless execution of initiatives. Establishing a clear organizational structure and coordination strategy enhances the CoP's ability to translate ideas into actionable outcomes, maximizing its impact on the housing landscape.

Focus 2: Creating Alternative Housing Finance Models

Recognizing the multifaceted challenges surrounding housing affordability and financing, our routemap dedicates a significant effort to creating innovative and sustainable housing finance models. Traditional approaches often fall short in meeting the diverse needs of communities. Through this activity, we aim to explore, design, and implement alternative financing mechanisms that empower individuals and communities to access quality housing. By harnessing the potential of creative financial solutions, we endeavor to break down barriers and unlock opportunities for individuals who have long been excluded from the housing market.

We have identified five activities for this focus area. The first is to work on defining the problematic of housing finance in Turkey, the second is to evaluate the findings to identify potential strategies, the third is to create a guide for individuals and communities willing to take part in community-based housing initiatives, the fourth is to carry out activities to increase interest in alternative housing finance, and the last is to monitor and evaluate the entire process. Through the diligent execution of these activities, we endeavor to create a paradigm shift in housing finance, offering innovative and sustainable solutions that empower individuals and communities to access quality housing while fostering economic resilience and social inclusion.

Activity #01

Define Objectives of Alternative Housing Finance

In the context of Turkey's unique housing challenges, this activity undertakes a meticulous assessment of the precise goals and objectives underpinning the formulation of alternative housing finance models. By meticulously delineating these objectives, we lay the groundwork for a strategic blueprint that not only propels the development process but also resonates with the exigent housing issues affecting diverse communities. This process takes into careful consideration the distinct requirements of marginalized groups and individuals, striving to engineer financial mechanisms that prioritize affordability, sustainability, and unobstructed access. This proactive endeavor ensures that our initiatives harmonize seamlessly with our overarching mission of fostering empowerment among vulnerable segments of society and effecting transformative change within Turkey's housing landscape.

Activity #02

Screening and Due Diligence & Risk Assessment

Prior to implementation, rigorous screening and due diligence are imperative to assess the feasibility and potential impact of alternative housing finance models. This activity entails a thorough evaluation of financial instruments, risk factors, and regulatory considerations. By conducting comprehensive risk assessments, we identify potential challenges and opportunities, enabling us to design models that mitigate risks and maximize benefits for both investors and housing seekers.

Activity #03

Develop Alternative Housing Finance Policies & Principles of Guideline

This activity involves crafting a comprehensive set of policies that govern various aspects, such as eligibility criteria, interest rates, repayment terms, and borrower protections. By establishing a clear framework, we ensure transparency, fairness, and accountability in the functioning of these models, fostering trust and confidence among stakeholders.

Activity #04

Encourage Alternative Housing Finance Models

To drive widespread adoption, this activity focuses on fostering an ecosystem that encourages the adoption of alternative housing finance models. We engage with key stakeholders, including financial institutions, regulatory bodies, and community organizations, to advocate for the integration of innovative financial solutions. By promoting awareness, sharing success stories, and demonstrating the benefits of these models, we aim to create a supportive environment that paves the way for transformative change.

Activity #05

Monitoring & Evaluation & Measurement of Impact

Continuous monitoring, evaluation, and impact assessment are vital components of ensuring the effectiveness and sustainability of alternative housing finance models. This activity involves establishing mechanisms to track financial performance, assess social impact, and measure outcomes. By collecting data and feedback, we can refine and optimize these models over time, demonstrating their value and facilitating evidence-based decision-making.

Focus 3:

Localize the Movement

Acknowledging the unique socio-cultural and geographical contexts within Turkey, our routemap places a strong emphasis on localization. We understand that effective solutions must be tailored to the specific needs and aspirations of different communities. Through this activity, we strive to foster a deep understanding of local dynamics, engage with grassroots actors, and adapt our strategies to reflect the realities on the ground. By integrating localized knowledge and perspectives, we ensure that our housing initiatives resonate authentically and create lasting impact within diverse regions.

We have identified five activities for this focus area. The first one is to reach out to local communities experiencing the housing problem in Turkey and share our knowledge, the second one is to collaborate with local organizations to develop community-led housing solutions, the third one is to support the formation of local housing communities for action and advocacy, the fourth one is the customization of housing alternatives, and the last one is local policy advocacy with local content. Through the meticulous execution of these activities, our efforts are channeled toward building localized housing movements that uphold cultural richness, embrace community aspirations, and drive tangible improvements in housing conditions throughout diverse regions of Turkey.

Activity #01

Community Outreach

Recognizing the intricate tapestry of social nuances across Turkey, this activity centers on proactive community engagement. Through targeted outreach initiatives, we facilitate open dialogues and information-sharing with local residents. By listening to their unique perspectives, aspirations, and challenges, we cultivate a deeper understanding of their housing needs. This grassroots connection forms the bedrock upon which locally relevant solutions can be built.

Activity #02

Collaboration with Local Organizations

Effective change requires collaborative synergy. In this light, we foster strategic partnerships with local organizations that possess a nuanced understanding of regional dynamics. This activity emphasizes joint efforts in research, resource mobilization, and expertise sharing. By pooling our strengths, we co-create housing interventions that align with the specific fabric of each community, enhancing the prospects of sustainable impact.

Activity #03

Building Local Housing Communities

At the heart of this sub-activity lies the cultivation of cohesive housing communities. We work closely with residents to establish vibrant, supportive, and inclusive local networks. Through community-building initiatives, we nurture spaces for shared learning, skill development, and mutual support. This approach not only fosters a sense of belonging but also empowers residents to actively shape their housing environments in ways that best suit their distinct aspirations.

Activity #04

Customization of Housing Solutions

No two communities are alike, and our approach acknowledges this diversity. Through this activity, we tailor housing solutions to the specific contexts and preferences of each locale. We collaborate with residents to design and implement housing interventions that reflect their cultural values, spatial requirements, and economic circumstances. This customization ensures that our initiatives are not only effective but also resonant, driving lasting positive change.

Activity #05

Local Policy Advocacy

Advocacy plays a pivotal role in influencing policy changes that impact housing. This activity focuses on amplifying local voices to advocate for policy reforms that align with community needs. We work alongside local stakeholders to elevate their concerns to decision-makers, influencing the creation of policies that foster equitable and sustainable housing solutions. By bridging the gap between communities and policymakers, we strive for a more supportive regulatory environment that enables long-term positive transformation.

Focus 4: Spread the Action & Scale Your Impact

While local efforts are crucial, widespread change requires a collective and amplified approach. In this light, our routemap's final activity focuses on expanding the reach and impact of our housing solutions. By sharing successful practices, building strategic partnerships, and harnessing the power of advocacy, we aim to catalyze a movement that reverberates beyond individual communities. Through strategic dissemination and scaling, we aspire to create a ripple effect of positive change, inspiring others to join us in the pursuit of accessible and dignified housing for all.

We identified seven activities for this focus: first, to communicate the importance of community-based housing through awareness-raising campaigns; second, to advocate for the mainstreaming of community-based housing models and practices; third, to document and share all learning throughout the process; fourth, to develop a expansion

strategy to manage different practices in different localities; fifth, to increase the number of partnerships with local and national institutions; sixth, to place community-based housing on the national and international policy agenda; and last, to engage in ongoing media and public relations work. Through the strategic orchestration of these activities, our efforts extend beyond individual communities, catalyzing a movement that resonates across regions and even nations. By fostering collaboration, inspiring policy changes, and harnessing the influence of media and partnerships, we strive to create an enduring ripple effect of positive change in the realm of community-led housing.

Activity #01

Awareness Campaigns

In the endeavor to drive widespread change, this activity involves orchestrating a series of impactful awareness campaigns. Through the organization of events, workshops, and compelling media campaigns, we aim to shed light on the pivotal role that community-led housing plays in reducing the housing crisis. By highlighting success stories and underscoring the profound impact on local communities, we aspire to ignite a collective consciousness and garner support for the cause.

Activity #02

Policy Advocacy & Replication

Scaling impact requires a robust foundation of supportive policies. This activity centers on vigorous policy advocacy at both local and national levels. By advocating for policy reforms that endorse and empower community-led housing models, we create an enabling environment for their proliferation. Simultaneously, we work to replicate successful housing policies and models in different regions, amplifying the transformative potential of community-led approaches.

Activity #03

Documentation and Knowledge Sharing

Effective dissemination of knowledge is key to inspiring and guiding others. This activity involves meticulous documentation of best practices, case studies, and lessons learned from the CoP's successful community-led housing projects. By sharing these insights through accessible platforms, we empower other communities to adopt similar approaches, promoting a culture of knowledge exchange and continuous improvement.

Activity #04

Expansion Strategy

To extend the impact beyond initial communities, a strategic expansion plan is paramount. This activity encompasses the development of a comprehensive strategy for replicating successful housing models in neighboring communities or regions. Through meticulous planning, resource allocation, and collaboration, we aim to catalyze the organic growth of community-led housing initiatives.

Activity #05

Partnership Building

Collaborative alliances bolster the journey towards scalable impact. This activity focuses on forging partnerships with regional and national organizations that share our vision. By leveraging their resources, expertise, and networks, we amplify our collective influence, magnifying the reach and effectiveness of community-led housing initiatives.

Activity #06

Influence National & International Housing Agendas

For transformative change, integration into national and international housing agendas is essential. This activity centers on engaging with policymakers and housing authorities to champion community-led housing as a viable solution on a broader scale. By participating in relevant dialogues and forums, we strive to shape policy discussions and secure commitments to prioritize equitable housing practices.

Activity #07

Media and Public Relations

The power of storytelling and public engagement cannot be underestimated. This activity involves collaboration with local media outlets to amplify success stories, spotlight the positive impact of community-led housing, and raise public awareness. By harnessing the media's reach, we aim to foster public support, galvanizing a groundswell of momentum for accessible and dignified housing solutions.

Together, these four interconnected focus areas form the backbone of our routemap, representing a holistic and dynamic strategy to address housing challenges, empower as a Community of Practice and inspire others, and shape a more just and equitable future for Turkey.

Spain

La Borda

Nestled within the heart of Barcelona, the La Borda housing cooperative stands as an exemplary beacon of community-led innovation and collaborative living. This pioneering initiative redefines conventional housing paradigms by placing people at the center of decision-making and design processes. La Borda's success emanates from its deep-rooted commitment to principles of shared responsibility, inclusivity, and sustainability. By offering residents the agency to actively participate in the planning, construction, and management of their homes, this cooperative not only addresses the pressing issue of affordable housing but also nurtures a vibrant ecosystem of mutual support and social cohesion. La Borda serves as a resounding testament to the transformative power of community-led models, illustrating how collective aspirations can flourish into vibrant, thriving communities that shape their own destinies.



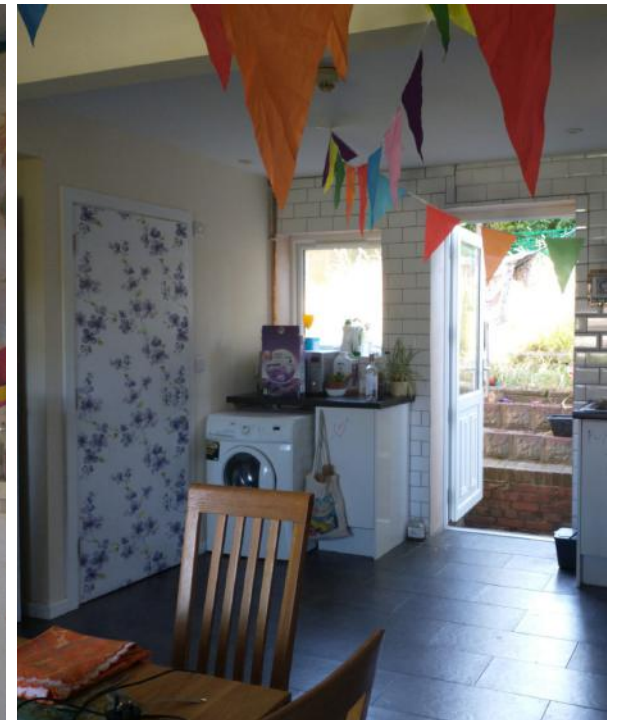
UK

Seasalt

A shining example of innovative housing solutions, SEASALT Housing Co-operative (South East Students Autonomously Living Together) was established in Spring 2018 by a visionary group of Sussex students. This pioneering cooperative addresses the pressing need for student housing by crafting affordable, meticulously designed living spaces tailored to students' unique requirements. As a resident-owned and -managed entity, SEASALT eliminates the woes of unresponsive landlords, subpar accommodations, and exorbitant rents. Drawing inspiration from successful student housing co-operatives that have thrived in the US since the 1930s, SEASALT proudly stands as Brighton & Hove's first-ever student housing co-operative, bringing the transformative power of collective ownership and responsible management to the forefront. By championing affordability, quality, and autonomy, SEASALT offers a commendable model that not only redefines student living but also champions the empowerment of a new generation.



seasalthousingcooperative



Denmark

CPH Village

CPH Village emerges as a stellar archetype of modern coliving innovation, reshaping urban living dynamics in Copenhagen and beyond. Established with a progressive vision, CPH Village offers a fresh approach to community-driven housing. By seamlessly blending comfortable, functional living spaces with a vibrant social ecosystem, this coliving venture fosters connections and collaboration among diverse residents. Notably, CPH Village's commitment to sustainable design and eco-friendly practices sets it apart as a trailblazing model for environmentally conscious urban living. Through its innovative fusion of comfort, community, and sustainability, CPH Village exemplifies a new era of urban housing that resonates with the evolving needs and aspirations of today's global citizens.



cphvillage



USA

National Housing Justice Platform

The National Housing Justice Platform stands as a compelling and transformative illustration of collective advocacy in the realm of housing rights. This dynamic platform unites diverse stakeholders, including community activists, housing experts, policymakers, and citizens, under a common banner of addressing housing inequalities and fostering social change. By amalgamating their voices and insights, the Platform serves as an influential catalyst for meaningful policy reforms and grassroots mobilization. Its strength resides in its capacity to bring attention to structural inequalities and put forth holistic remedies that surpass geographical and demographic confines. Through its resolute dedication to equitable housing access and systemic transformation, the National Housing Justice Platform sets an exceptional example of collaborative advocacy that propels the pursuit of housing as a fundamental human right.



housingjusticeplatform



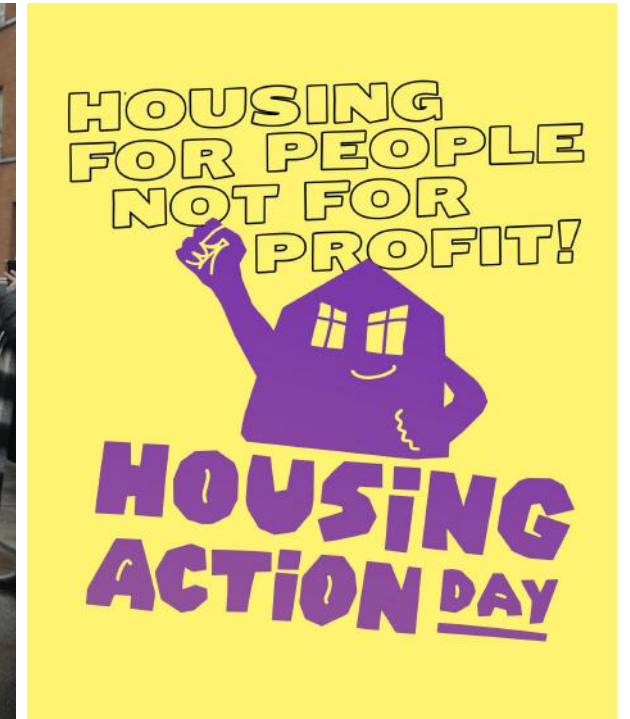
Europe

The European Action Coalition for the Right to Housing and to the City

At the forefront of the global housing rights movement, The European Action Coalition for the Right to Housing and to the City stands as an exemplary testament to international solidarity and cross-border collaboration. Bringing together a diverse tapestry of housing activists, urban planners, and concerned citizens from across Europe, this coalition shines a spotlight on the shared challenges faced by communities navigating urbanization and housing access. Through strategic advocacy, impactful campaigns, and transnational dialogues, the Coalition showcases the power of unity in effecting change. Its significance lies in its ability to bridge geographical and cultural divides, fostering a collective vision for housing justice and urban equality. By addressing the intricacies of housing disparities within an international context, The European Action Coalition for the Right to Housing and to the City sets a commendable example that transcends borders and inspires collaborative action on a continental scale.



housingnotprofit



Türkiye

Düzce Hope Homes

Düzce Hope Homes emerges as a powerful exemplar of grassroots initiatives transforming lives through community-driven housing solutions. This innovative project reflects the unwavering commitment of local volunteers and activists to provide dignified shelter to vulnerable populations. By channeling their collective efforts into constructing safe, affordable homes, Hope Homes showcases the power of local action in addressing housing disparities. Its significance lies in its ability to self-determination and commitment of the community of renters who were the victims of the 1999 earthquake in Turkey. Düzce Hope Homes stands as an inspiring model that underscores the potential of solidarity in reshaping the narrative of housing accessibility.



duzceumutatolyesi

tık tık

Regional Network

Asian Coalition for Housing Rights

With a 24-year history, the Asian Coalition for Housing Rights (ACHR) exemplifies collaborative regional efforts in the pursuit of housing justice. Comprising Asian professionals, NGOs, and community organizations, ACHR is driven by the goal of enacting change that respects cultural and political realities. The coalition's collective experience is a treasure trove of Asia's own developmental insights, addressing housing challenges through joint initiatives such as housing rights campaigns and citywide slum upgrading projects. In an era of rapid growth, ACHR's mission to amplify marginalized voices and harness the potential of affected communities showcases a grassroots-driven path toward equitable housing and inclusive progress.



achr



Community Led Homes - Start up Support Programme

The impactful Start Up Support Programme offered local groups and community organizations the necessary resources to forge their own community-led housing solutions. By extending seed corn funding and personalized 1:1 guidance to 98 projects in their earliest stages, the program facilitated exploration of housing creation possibilities. Through a structured approach encompassing vision development, legal structuring, skills enhancement, and community engagement, the initiative laid the groundwork for these projects to advance through the initial phases of community-led housing development. The program's holistic support acted as a catalyst, empowering groups to secure additional funding and push forward with diverse projects, ranging from new housing construction to repurposing existing structures for communal living.



communityledhomes



Greece

Co-Hab Athens

CoHab Athens stands as an innovative urban research and advocacy collective, uniting minds passionate about housing rights and communal ownership. Emerging in 2016, this open group provides a platform for urban researchers and activists to explore alternative housing models, fostering self-management and collective ownership. Motivated by the pressing need to address Greece's evolving housing crisis, CoHab Athens is engaged in an ongoing participatory design workshop, envisioning cooperative housing projects that reflect local needs. Through advocating legal amendments, cultivating collective property concepts, and propelling prototypes of alternative urban land ownership, CoHab Athens carves a path towards reshaping housing paradigms while forging connections with parallel initiatives worldwide.



cohabathens



Downsize Athens ↓ Decommify Properties 🚫🏠 Liberate Land make public space 🌱 Re-localize economy ⚙️ Renovate buildings enhance habitat quality 🔄 Self-management Share resources 🌐



UK

Radical Routes - How to Set Up a Housing Coop

Radical Roots is an illustration of a grassroots organization that works to unite people against capitalist exploitation. In order to build collective power, Radical Roots supports cooperation amongst cooperatives. It takes control of the economy and reshapes it for people and the environment using cooperatives as a tool. It develops a unique strategy for cooperatives and takes the initiative to promote it. They disseminate the knowledge required for creating cooperatives and moving on with implementation and management through the guides they provide.



**HOMES WITHOUT
LANDLORDS. WORK
WITHOUT BOSSES.**

Grassroots control and economic
revolution through co-operation



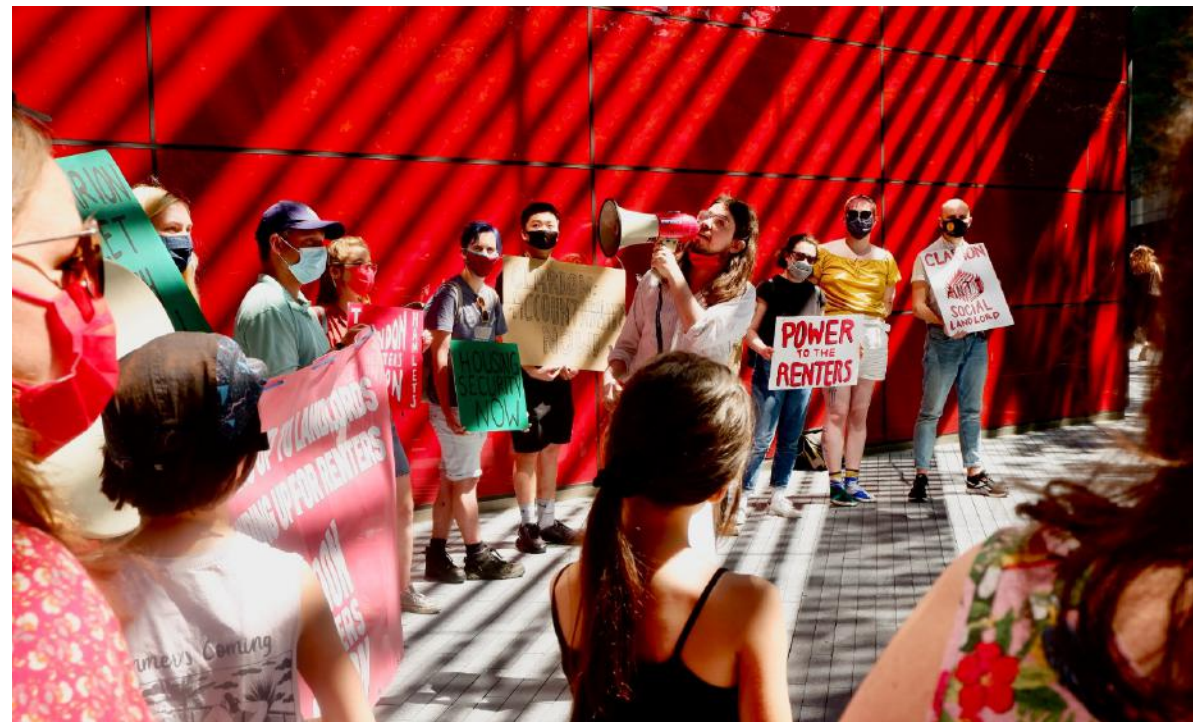
UK

Renters Unions

In the landscape of modern housing challenges, Tenant Unions emerge as a vital grassroots movement aimed at rebalancing the power dynamics between renters and landlords. With origins rooted in advocating for tenant rights and fair housing practices, these unions have evolved into formidable forces of collective action. Through education, advocacy, and direct action, Tenant Unions empower renters to assert their rights, challenge unjust policies, and demand equitable living conditions. These unions advance the goal of ensuring that all people have access to affordable, secure, and decent housing by encouraging solidarity and focusing on underprivileged tenants.



londonrentersunion



Don

roof coliving

ROADMAP

for a local alliance
for collective housing
in Türkiye

roof coliving

THE:PLACE
TURKEY HAND IN HAND WITH EUROPE
PROGRAMME FOR LOCAL AUTHORITIES
AND CIVIL SOCIETY'S EXCHANGE



alda
European Association
For Local Democracy



**STIFTUNG
MERCATOR**